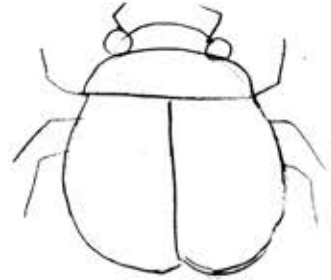


How to Paint a Simple Ladybug

1. Draw a circle with a pencil.



2. Sketch ladybug outline with a pencil. The antenna and legs will be painted over before they are traced but drawing them in here will help to visualize where they will be later.



3. Use a small round brush to trace outlines. Do not worry about the antenna and legs for now. You will add these after painting the background.



4. Use a flat brush to fill in colours.



5. Add spots and paint in the background.



6. Use the small round brush to add antenna and legs and touch up. Use a flat brush and watered down black paint to add shadow to the abdomen.

